

What is DOSH?



- **WASHINGTON STATE CONSTITUTION
ADOPTED OCTOBER 1, 1889**

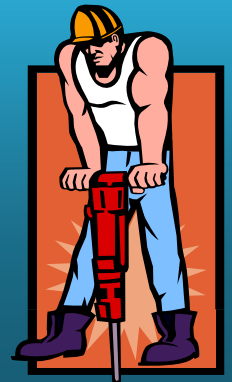
The legislature shall pass necessary laws for the protection of persons working in mines, factories and other employments dangerous to life or deleterious to health; and fix pains and penalties for the enforcement of the same.



RCW 49.17.010



...to assure insofar as may reasonably be possible, safe and healthful working conditions for every man and woman working in the state of Washington, ...



What is DOSH's Jurisdiction?



Areas of Concern



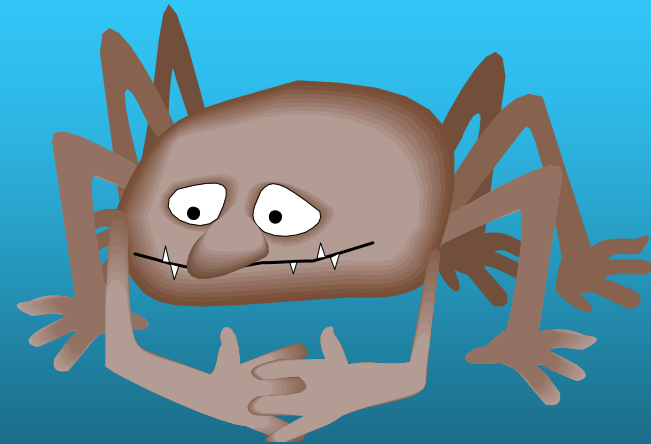
Trade & Skill Shops

Laboratories

Janitorial and maintenance

Remodeling projects

HVAC systems





Areas of Concern



- Asbestos
- Indoor air quality (mold)
- Violence
- School Buses (carbon monoxide)
- Pools
- Pesticides



What Triggers an Inspection



- Fatality/Catastrophe
- Employee Complaint
- Referral
- Scheduled/Programmed



Types of Citations?



- Asbestos
- Machine guarding
- Respiratory Protection requirements
- Unguarded floor openings/stairs
- Hazard Communication/Chemical Storage
- Housekeeping
- Safety Committees/APP
- Falls/Slips/Trips
- PPE





Wrap-up & Questions?

Contact your local L&I office with questions relating to safety and health concerns.

www.Lni.wa.gov

Lezlie A. Perrin, IH & Safety Program Manager

Technical Services

(360) 902-5425 or pero235@lni.wa.gov