



## **BRIEFING: DEPARTMENT OF HEALTH UPDATE**

Washington State Board of Health  
April 14, 2021



## Overview

1. Introduction to Dr. Umair A. Shah
2. COVID Status Update
3. Vaccine Distribution
4. Legislative Update, Kelly Cooper

# #TX2WA





## Secretary's Priorities

### *COVID-19 and Health Transformation*

1. Equity
2. Innovation
3. Engagement
4. Partnership
5. Capacity-Building
6. Global-Domestic Health

---

*Telling the Story and Highlighting the Value of Public Health*

# #InvisibilityCrisis

---

## THREE V'S OF PUBLIC HEALTH

*Visibility*

•

*Value*

•

*Validation*

---

## OFFENSIVE LINE



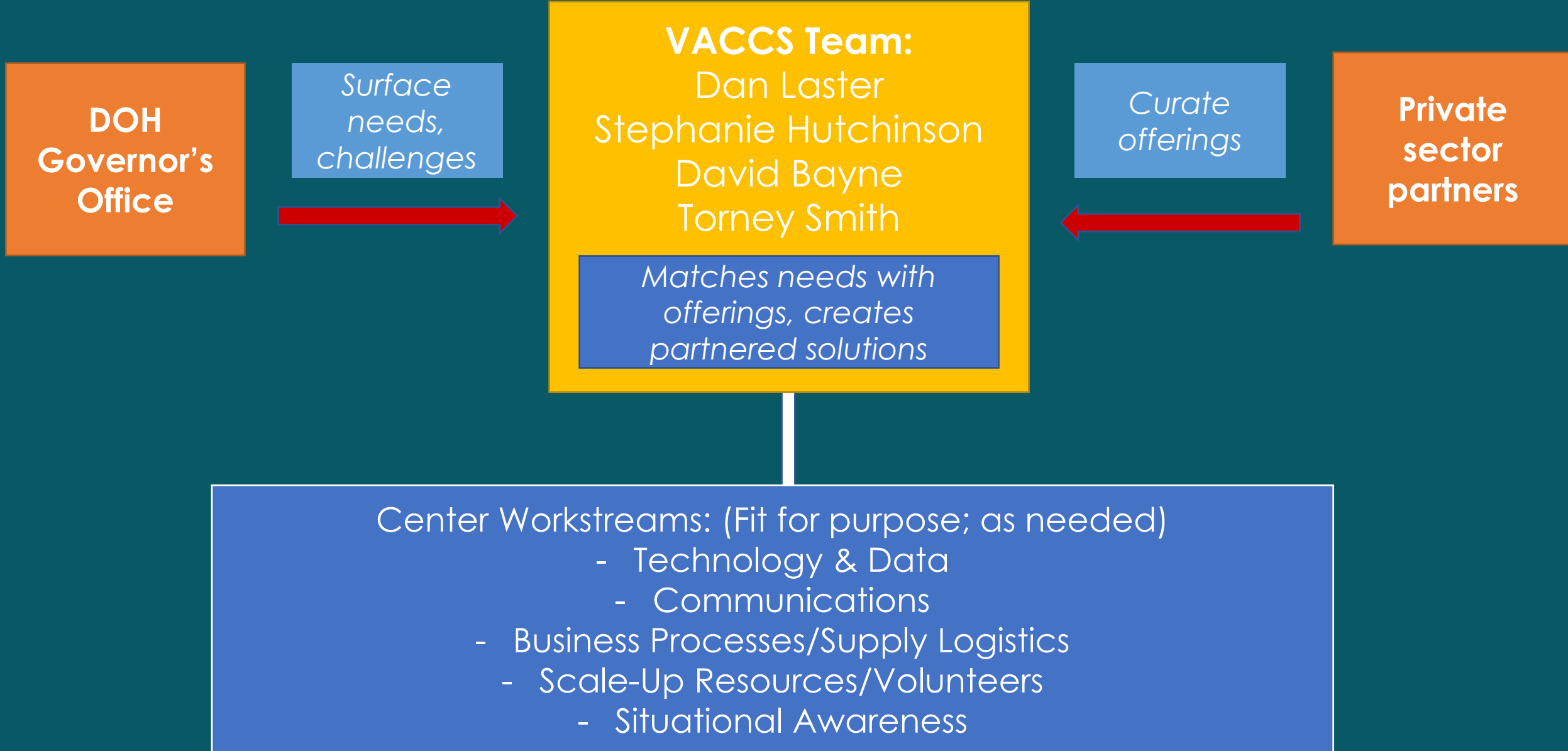
# Robust COVID-19 Response: Communication, Coordination and Collaboration

## KEY EFFORTS



1. Data Monitoring
2. Timely Testing
3. Epidemiologic Investigation
4. Contact Tracing
5. Expedient Quarantine and Isolation
6. Healthcare/Hospital Support and Therapeutics
7. Communications/Community Engagement
8. Messaging 3Ws (Wear Mask, Wash Hands, Watch Distance)
9. Financial & Social Supports
10. Vaccines & Process of Assuring Vaccinations

# VACCS Center Structure





---

## *Equity and Engagement*

1. Community informed vaccine prioritization
  2. Culturally & linguistically appropriate and accessible communications, education, and outreach
  3. Strengthening public health system's ability to center communities in vaccine outreach and access
  4. Investing in trusted community leaders and messengers
  5. Supporting a trauma-informed approach to vaccine conversations
-

The background image shows a vast, open landscape with rolling hills under a clear sky. A paved road with yellow double lines winds through the foreground and middle ground, curving to the left. The hills are covered in dry, golden-brown grass and some sparse green shrubs. In the distance, a small cluster of buildings is visible on a hillside. A large teal circle with a white border is positioned on the right side of the image, containing the text.

## **Future State: Looking Ahead**

A well-recognized  
and well-resourced  
public health system that  
is strong, adaptable  
and responsive  
to community  
needs.

# Personnel changes



## Welcome Liz Perez

Elizabeth joined DOH from Harris County Public Health (HCPH) where she served as Director of the Office of Communications, Education, and Engagement since 2015. Before HCPH, Elizabeth served as Public Health and Communication Advisor at the U.S. Department of Health and Human Services at both the Substance Abuse and Mental Health Services Administration and the Office of Minority Health. Elizabeth came to public health after spending a decade in the healthcare in Southern California.

Originally from California, she received her Bachelor's in Radiation Sciences, with an emphasis in health administration and research, and a Master's in Public Health in Health Policy and Leadership from Loma Linda University.

*David Bayne is serving in a new role as the DOH Director of Strategic Engagement for Public/Private Partnerships.*

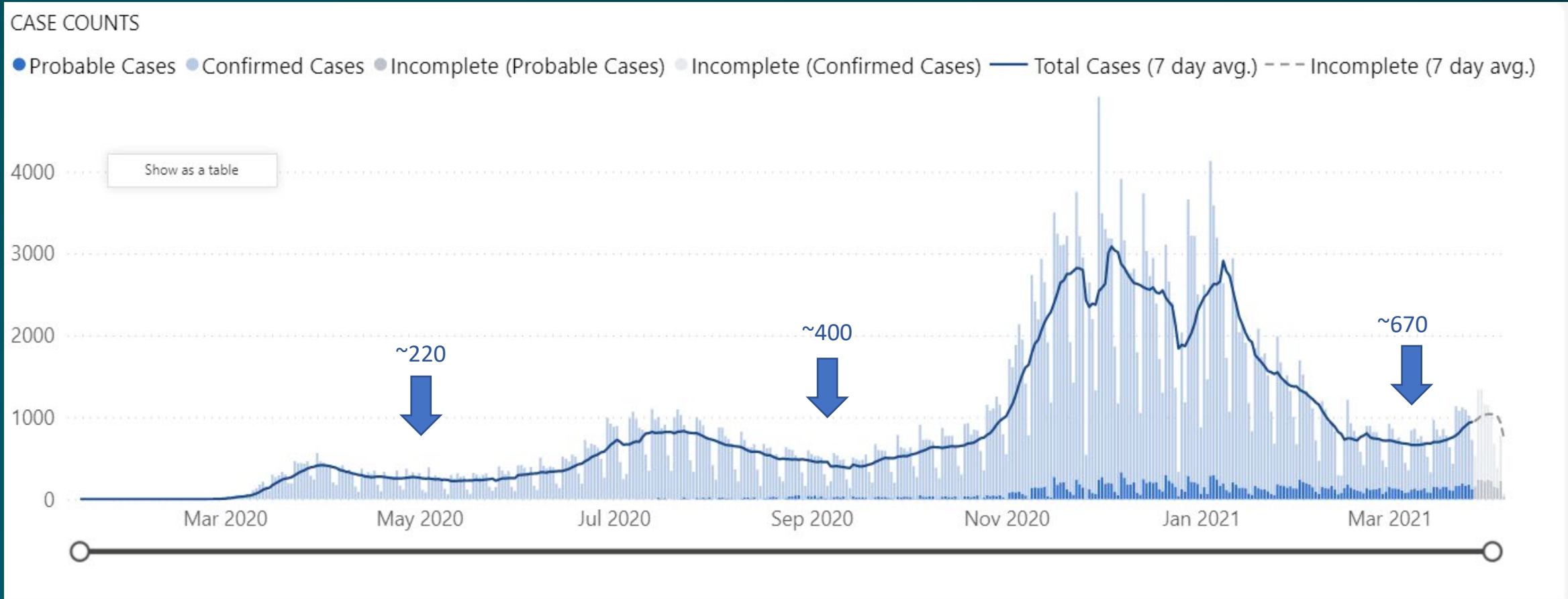
# COVID-19 Response Update

---

## Healthy Washington: Roadmap to Recovery

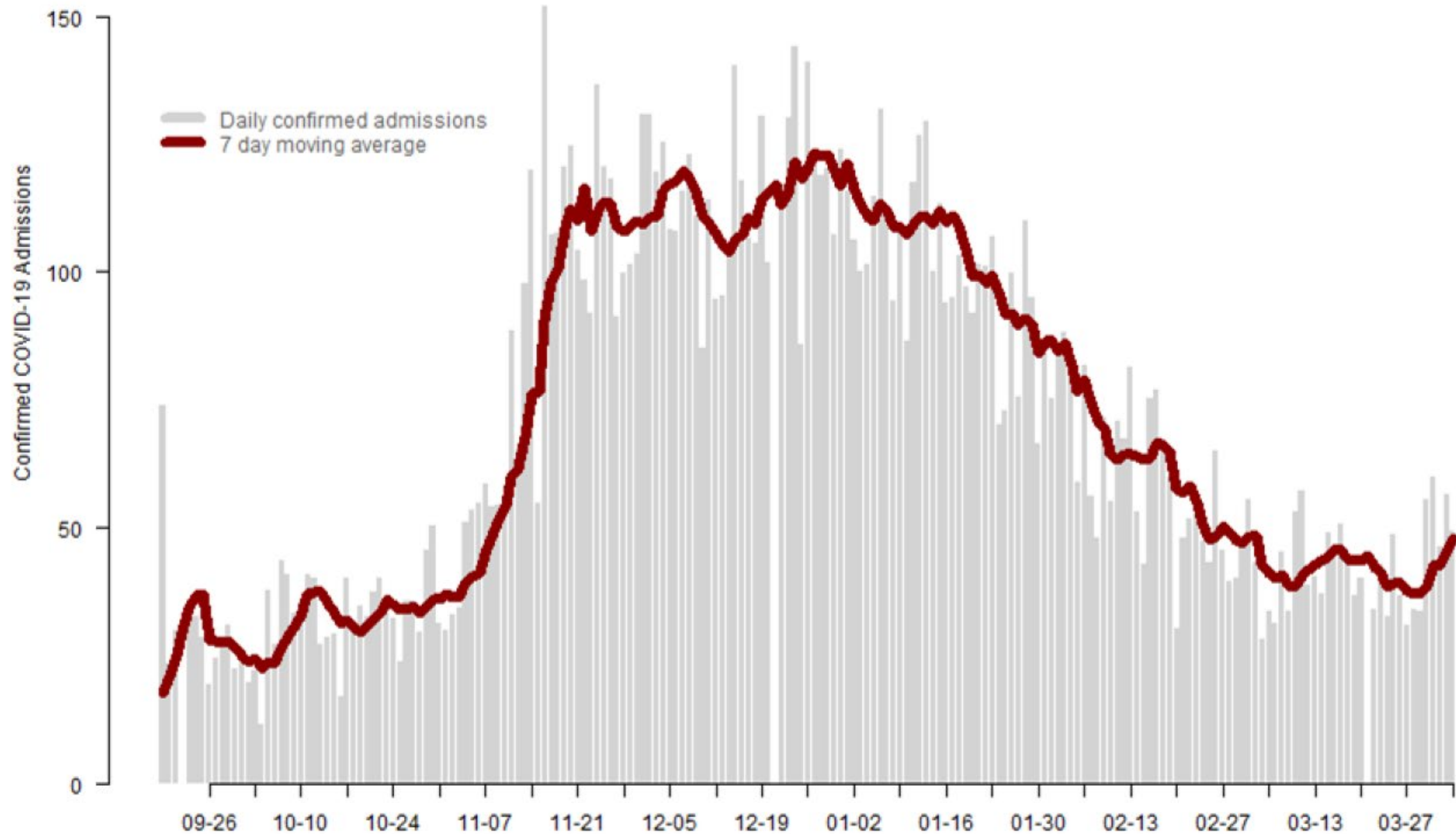
County Size	Indicator	Phase 1	Phase 2	Phase 3
Larger County	New COVID cases per 100,000 population over 14 days	> 350	200 - 350	< 200
	New COVID hospitalizations per 100,000 population per 7 days	> 10	5 - 10	< 5
Smaller County (< 50k people)	New COVID cases over 14 days	> 175	100 - 175	< 100
	New COVID hospitalizations over 7 days	> 5	3 - 5	< 3

# COVID-19 Cases in Washington State data as of 4/6/2021 11:59 PM PT



<https://www.doh.wa.gov/Emergencies/COVID19/DataDashboard>

# WA Health COVID-19 hospital admissions



# Healthy Washington: Roadmap to Recovery

## Healthy Washington: Roadmap to Recovery

# COVID-19 Vaccine Response Update

---

Current Status

Epidemiologic Curves

Cumulative Counts

Demographics

Testing

COVID-like Illness  
Hospitalizations

Vaccinations

Where and when are  
vaccinations being given?How many people are getting  
vaccinated?

Who is getting vaccinated?



## COVID-19 IN WASHINGTON STATE

Where and when are vaccinations being given?

DATA AS OF 4/3/2021 11:59 PM PT

This chart shows the number of COVID-19 vaccines given in Washington state facilities and reported to the state. Vaccine doses given reflects the data reported to the state as of the latest update date. Please note, the measures "vaccines given" and "people vaccinated" are not comparable. Vaccines given counts number of doses given in a location. People vaccinated counts number of Washington residents initiating vaccination and becoming fully vaccinated. Numbers may not always align since people may live in a different county than where they got vaccinated. Vaccination data are updated on Mondays, Wednesdays, and Fridays only. [Learn More](#)

## SELECT COUNTY

Search

- ☐ Select all
- ☐ Adams County
- ☐ Asotin County
- ☐ Benton County
- ☐ Chelan County
- ☐ Clallam County
- ☐ Clark County
- ☐ Columbia County
- ☐ Cowlitz County
- ☐ Douglas County
- ☐ Ferry County
- ☐ Franklin County
- ☐ Garfield County
- ☐ Grant County

By Location

By Date

Vaccine Doses Given  
and Reported (statewide  
or selected counties)

3,722,703

## Statewide Measures Only

Vaccine Doses Given  
and Reported in  
Washington

3,722,703

Doses Delivered to  
Washington Providers

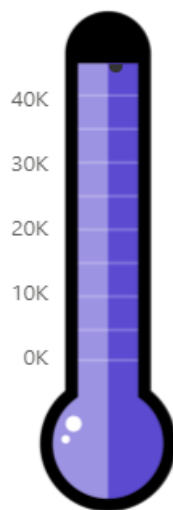
4,291,890

Doses Delivered for  
CDC long-term care  
vaccination program

186,030

Percentage of  
Delivered Doses  
Given

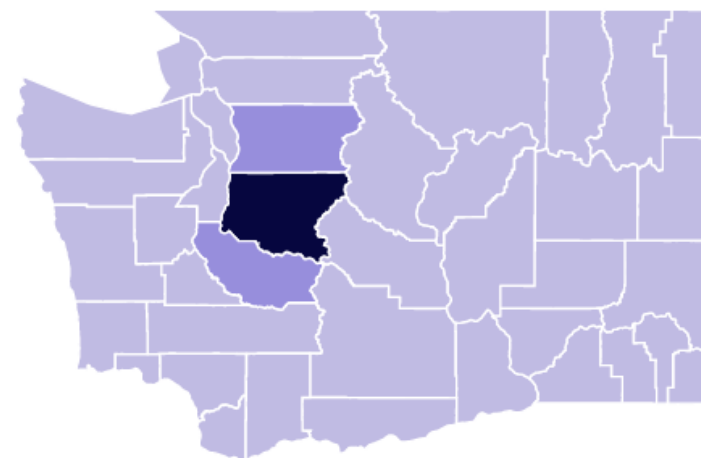
83.13%

VACCINE DOSES GIVEN AND  
REPORTED PER DAY  
Washington State

DOH Goal:  
45,000

Current 7-day  
average:  
59,600

## VACCINE DOSES GIVEN AND REPORTED IN WASHINGTON COUNTIES



0 1 to 243,916 243,917 to 487,832 487,833 to 731,749 731,750 to 975,665 975,666 to 1,219,581

County data for doses given are based on the location of the facility giving the vaccine. 61,561 vaccine doses given do not have a county reported.

County-level information can be found on Local Health Jurisdiction (LHJ) [websites](#)

<https://www.doh.wa.gov/Emergencies/COVID19/DataDashboard#dashboard>

# Allocation Projections – Three Week Forecast

## Allocation Projections

	<b>April 04, 2021</b> <small>Forecast For Week Ending</small>	<b>April 11, 2021</b> <small>Forecast For Week Ending</small>	<b>April 18, 2021</b> <small>Forecast For Week Ending</small>
<b>All Vaccines</b>	<b>458,340</b> <small>Total Doses - All Vaccine Types</small>	<b>412,570</b> <small>Total Doses - All Vaccine Types</small>	<b>390,340</b> <small>Total Doses - All Vaccine Types</small>
<b>Pfizer</b>	<b>100,620</b> <small>1st Doses - Pfizer</small>	<b>100,620</b> <small>1st Doses - Pfizer</small>	<b>100,620</b> <small>1st Doses - Pfizer</small>
	<b>100,620</b> <small>2nd Doses - Pfizer</small>	<b>122,850</b> <small>2nd Doses - Pfizer</small>	<b>100,620</b> <small>2nd Doses - Pfizer</small>
<b>Moderna</b>	<b>75,700</b> <small>1st Doses - Moderna</small>	<b>75,700</b> <small>1st Doses - Moderna</small>	<b>75,700</b> <small>1st Doses - Moderna</small>
	<b>72,400</b> <small>2nd Doses - Moderna</small>	<b>72,400</b> <small>2nd Doses - Moderna</small>	<b>72,400</b> <small>2nd Doses - Moderna</small>
<b>Janssen</b>	<b>109,000</b> <small>1st Doses - Janssen</small>	<b>41,000</b> <small>1st Doses - Janssen</small>	<b>41,000</b> <small>1st Doses - Janssen</small>

# WASHINGTON'S COVID-19 VACCINE PHASES

Go to [VaccineLocator.doh.wa.gov](https://vaccineLocator.doh.wa.gov) to find and schedule an appointment

1A  
TIER 1  
1A  
TIER 2

1B  
TIER 1

1B  
TIER 2

1B  
TIER 3  
1B  
TIER 4

DECEMBER 2020 – PRESENT 2021

- High-risk health care workers in health care settings
- High-risk first responders
- Long-term care facility residents
- All other workers at risk in health care settings

- All people **65 years or older**
- All people **50 years or older** in multigenerational households (home where individuals from 2 or more generations reside such as an elder and a grandchild)
- Educators and staff for pre-K through 12th grade
- Child care providers

- High-risk critical workers who work in certain congregate settings: Agriculture; fishing vessel crews; food processing; grocery stores; corrections; prisons, jails or detention centers; public transit; remaining first responders
- People **16 years or older** who are pregnant or have a disability that puts them at high risk for severe COVID-19 illness.

- People **16 years or older** with 2 or more co-morbidities or underlying conditions
- All people **60 years and older**
- People, staff and volunteers in certain congregate living settings: Correctional facilities; group homes for people with disabilities; settings where people experiencing homelessness live or access services
- High-risk critical workers in certain congregate settings: restaurants, food services, construction and manufacturing

**FOCUS ON EQUITY:** This approach prioritizes population groups who have been disproportionately impacted by COVID-19 due to external social factors and systemic inequities, including people of color; people with limited English proficiency; people in shared housing, crowded housing, and multigenerational homes; people in poverty and low-wage earners; people with disabilities that are connected to underlying health conditions that may put them at higher risk of COVID-19; and people with access barriers to healthcare. The [social vulnerability index](#) is one of several inputs informing equitable vaccine allocation.

**NOTE:** Immigration and health insurance status do not impact eligibility.

The timeline represented here is tentative and subject to change based on vaccine supply and demand.

**Vaccinate  
WA**

[CovidVaccineWA.org](https://CovidVaccineWA.org)

DOH 348-785 January 2021  
Last updated 3/31/21

We are currently in Phase 1B tiers 3 and 4 of vaccine distribution

People 16 years or older with 2 or more co-morbidities or underlying conditions

All people 60 years and older

People, staff, and volunteers in certain congregate living settings: correctional facilities; group homes for people with disabilities; settings where people experiencing homelessness live or access services

High-risk critical workers\* in certain congregate settings: agriculture, fishing vessel crews, food processing, grocery store/food bank, corrections (prisons, jails, detention centers), court of law, public transit, remaining first responders, restaurants, food services, construction, and manufacturing

People 16 years or older who are pregnant or have a disability that puts them at high risk for severe COVID-19 illness

All people 50 and older who live in a multigenerational household

All workers in health care settings

Educators and school staff for pre-kindergarten through 12<sup>th</sup> grade and child care workers

People who live or work in long-term care facilities

*\*Work in an enclosed space around other people and cannot maintain physical distance.*

<https://www.doh.wa.gov/Emergencies/COVID19/VaccineInformation/AllocationandPrioritization>

# All adults are eligible to receive vaccine tomorrow

WASHINGTON GOVERNOR  
**JAY INSLEE**NEWS RELEASE

**March 31, 2021**  
Public and constituent inquiries | 360.902.4111  
Press inquiries | 360.902.4136

## Inslee announces vaccine eligibility expansion to all adults April 15

Gov. Jay Inslee today announced that effective April 15, all Washingtonians over the age of 16 will be eligible to receive a COVID-19 vaccination.

Over the past four months since Washington began administering doses of the vaccination, the state has followed a tiered eligibility system, beginning with those most at risk of hospitalization and death.

The governor and the state Department of Health (DOH) have also prioritized equity issues in each phase to ensure vaccine access to populations disproportionately affected by the virus, including communities of color and low-income communities.

The expansion of eligibility comes, in part, in response to a recent uptick in COVID cases in the state.

"We must do everything possible to ensure that we can keep cases down," Inslee said during a press conference Wednesday. "We have concerns about the trends we are seeing across the state and we must be cautious. Opening up full eligibility will be one tool to help in the fight against the virus.

"If we get vaccinated and continue the health practices that keep those around us healthy – masks, distancing and basic hygiene – we're going to knock this virus down. But we cannot get complacent. We feel like we are done with COVID, but this virus is not done with us yet."

Roughly 3.3 million doses have been administered in Washington to date, and more than one million residents have been fully vaccinated.

[Resources](#)

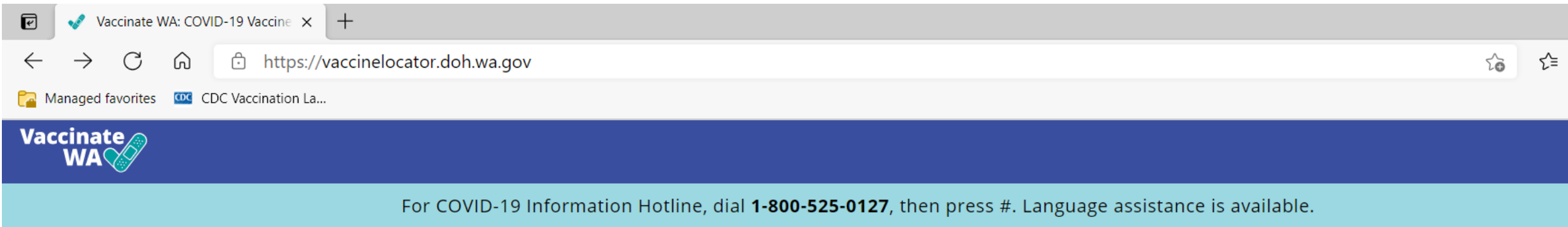
Find more information on the COVID-19 vaccine [here](#).

Use the Vaccine Locator tool to register for a vaccination appointment [here](#).

For DOH's COVID-19 Information Hotline, dial 1.800.525.0127, then press #. Language assistance is available.

# Vaccine Locator

[vaccinelocator.doh.wa.gov](https://vaccinelocator.doh.wa.gov)

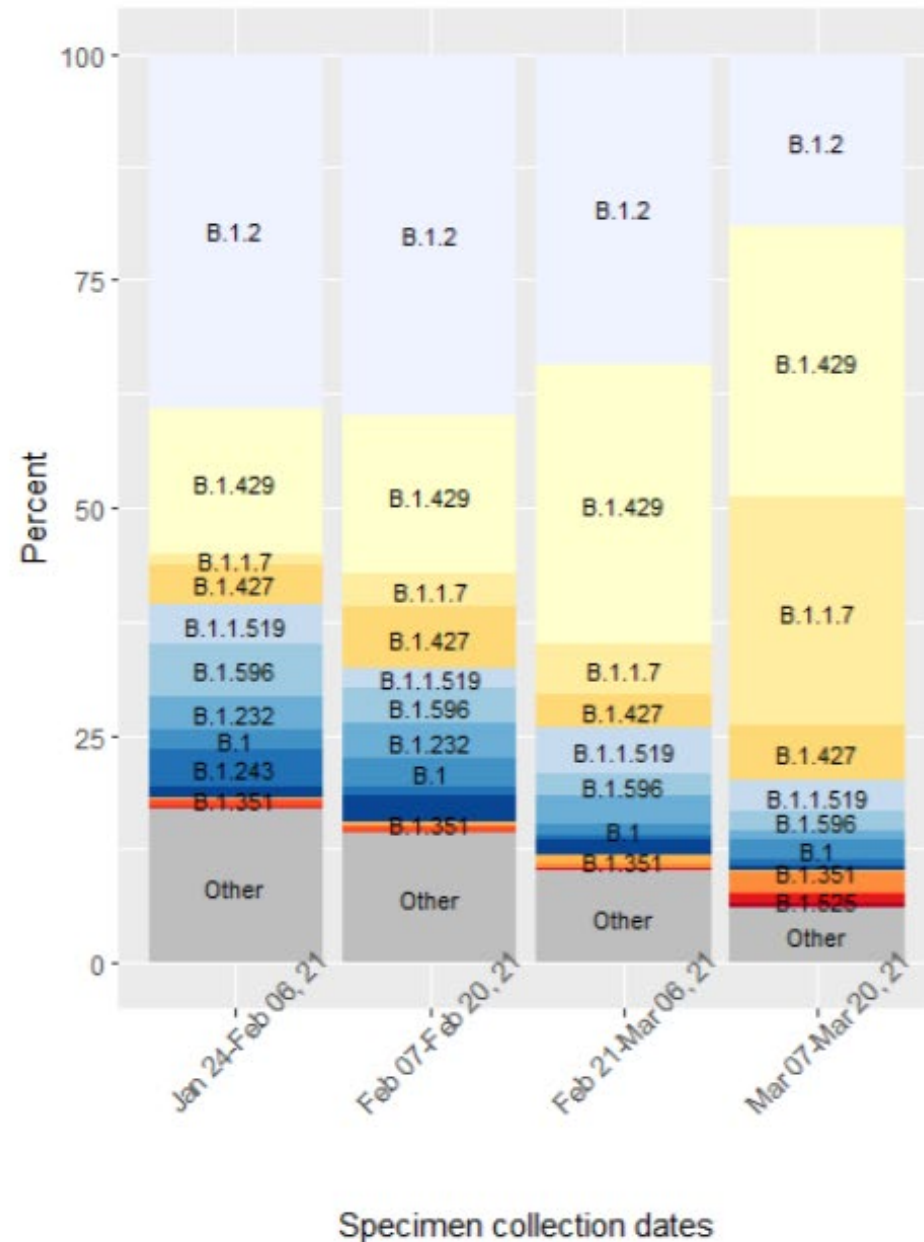


## Find COVID-19 vaccine appointments.

**Find appointments**

(within 50 miles)

# SARS-CoV-2 Lineages\* Circulating in Washington State



	Lineage	Percent total	Type
Top lineages	B.1.2	34.7	
	B.1.429	23.4	VOC
	B.1.1.7	6.7	VOC
	B.1.427	4.8	VOC
	B.1.1.519	4.0	
	B.1.596	3.7	
	B.1.232	3.1	
	B.1	2.0	
	B.1.243	1.7	
	B.1.587	1.6	
VOI / VOC not in top lineages	B.1.351	0.5	VOC
	P.1	0.5	VOC
	P.2	0.4	VOI
	B.1.525	0.2	VOI
	B.1.526	0.2	VOI
Other	Other	12.4	

# Schools and COVID-19

## K-12 Health and Safety Guidance

<https://www.doh.wa.gov/Portals/1/Documents/1600/coronavirus/FallGuidanceK-12.pdf>

## Decision Tools for In Person Learning

<https://www.doh.wa.gov/Portals/1/Documents/1600/coronavirus/DecisionTree-K12schools.pdf>

## Testing, Ventilation, & More

<https://www.doh.wa.gov/Emergencies/COVID19/ResourcesandRecommendations#schools>



# Legislative Update

---

**Kelly Cooper**

Director, Policy and Legislative Relations  
Washington State Department of Health

# Bills of Interest

- **E2SHB 1152** Comprehensive health districts (Riccelli)
- **ESHB 1184** Risk-based water standards (Duerr)
- **E2SHB 1258** Microenterprise home kitchen (Frame)
- **E2SHB 1272** Health system transparency (Macri)
- **HB 1328** Exempting information gathered for controlling diseases from public inspecting requirements (Pollet)
- **E2SHB 1477** National 988 system (Orwall)
- **SHB 1508** Shellfish sanitary control (Chapman)
- **E2SSB 5052** Health equity zones (Keiser)
- **E2SSB 5141** Environmental justice task force recommendations (Saldaña)

# Budget: COVID-19

## Contain the Spread of COVID-19

- Early Action (ESHB 1368 Enacted) – FY 2021 \$550M
- Biennium 2021-23

Governor			Senate			House		
GF-State	Other Funds	Total	GF-State	Other Funds	Total	GF-State	Other Funds	Total
\$387.5M	\$50.6M	\$438M		\$1.5B	\$1.5B		\$1.2B	\$1.2B

## Administer COVID-19 Vaccine

- Early Action (ESHB 1368 Enacted) – FY 2021 \$68M

# **Budget:**

## **Foundation Public Health Services (FPHS)**

- **Senate**

- Adds \$150M for the current biennium (\$175M total)
- Doubles funding to \$300M in out-biennia (\$328M total)

- **House**

- Adds \$100M for the next biennium (\$128M total)
- After next biennium, funding returns to \$28M

# American Rescue Plan

Estimates for what American Rescue Plan Act will provide to Washington

- \$4.5B in state fiscal relief
- \$2.7B in local fiscal relief
- \$1.8B in relief for K-12 schools
- \$229M from CDC to Washington to support COVID-19 screening testing for teachers, staff, and students to assist schools in reopening safely for in person instruction. [Source](#)
- Economic impact payments of up to \$1,400 per person for more than 4.4 million adults and 1.6 million children; 80% of all adults in the state and 77% of all children in state
- Additional relief of up to \$1,600 per child through the Child Tax Credit to families of 1.4 million children, lifting 66,000 children out of poverty
- Marketplace health insurance premiums that are \$1117 lower per month for a 60-year old couple earning \$75,000 per year

**Questions?**